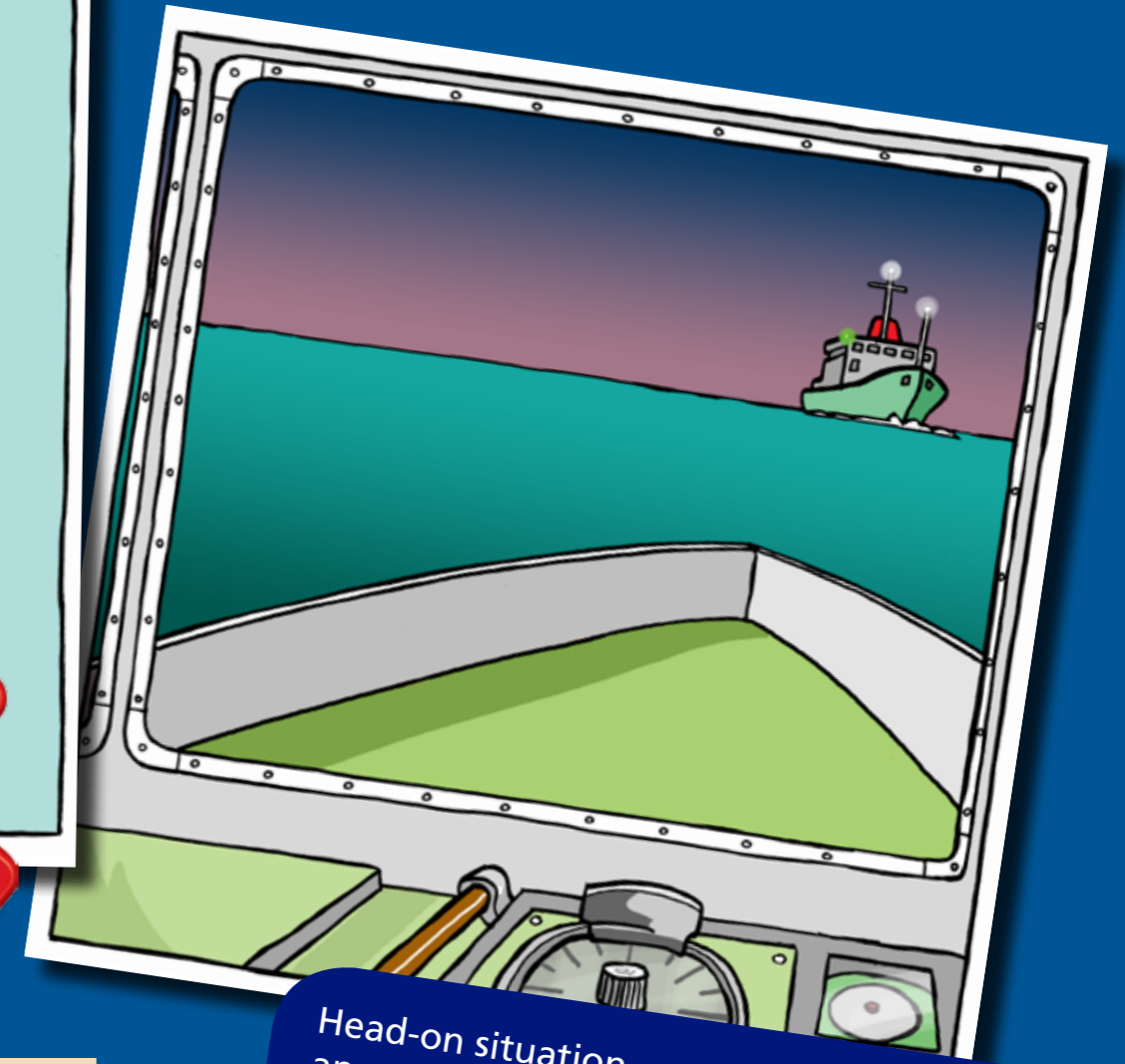
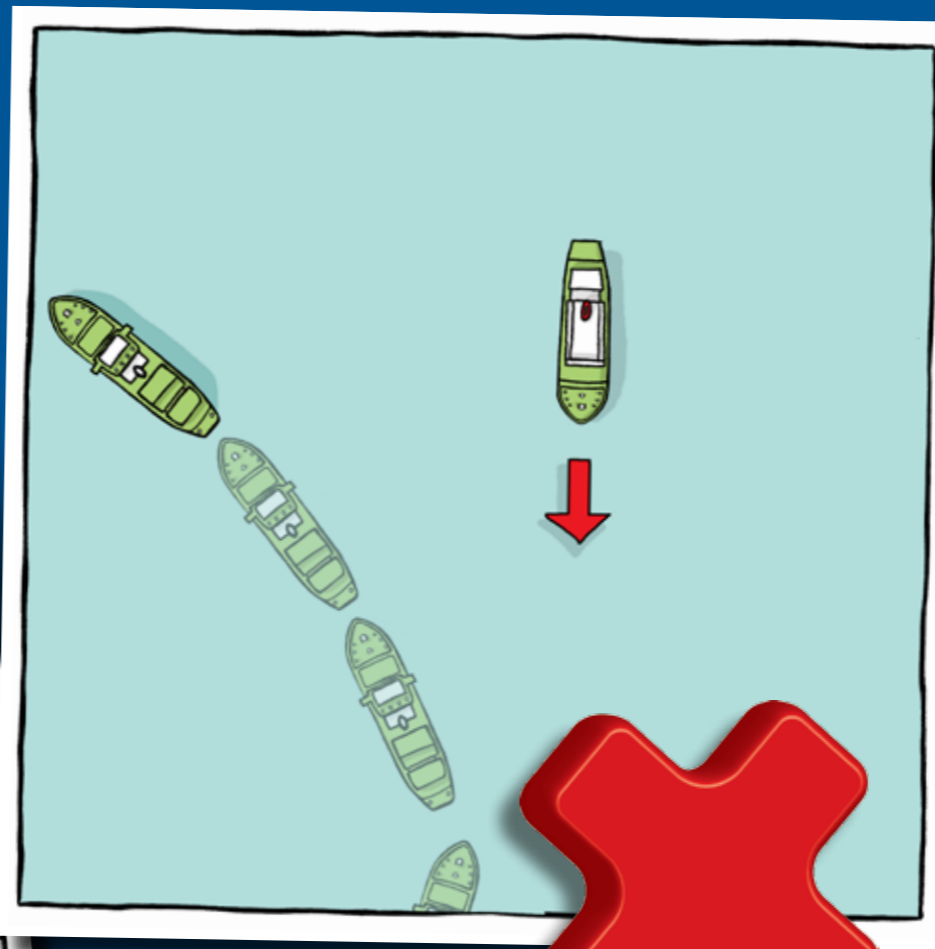
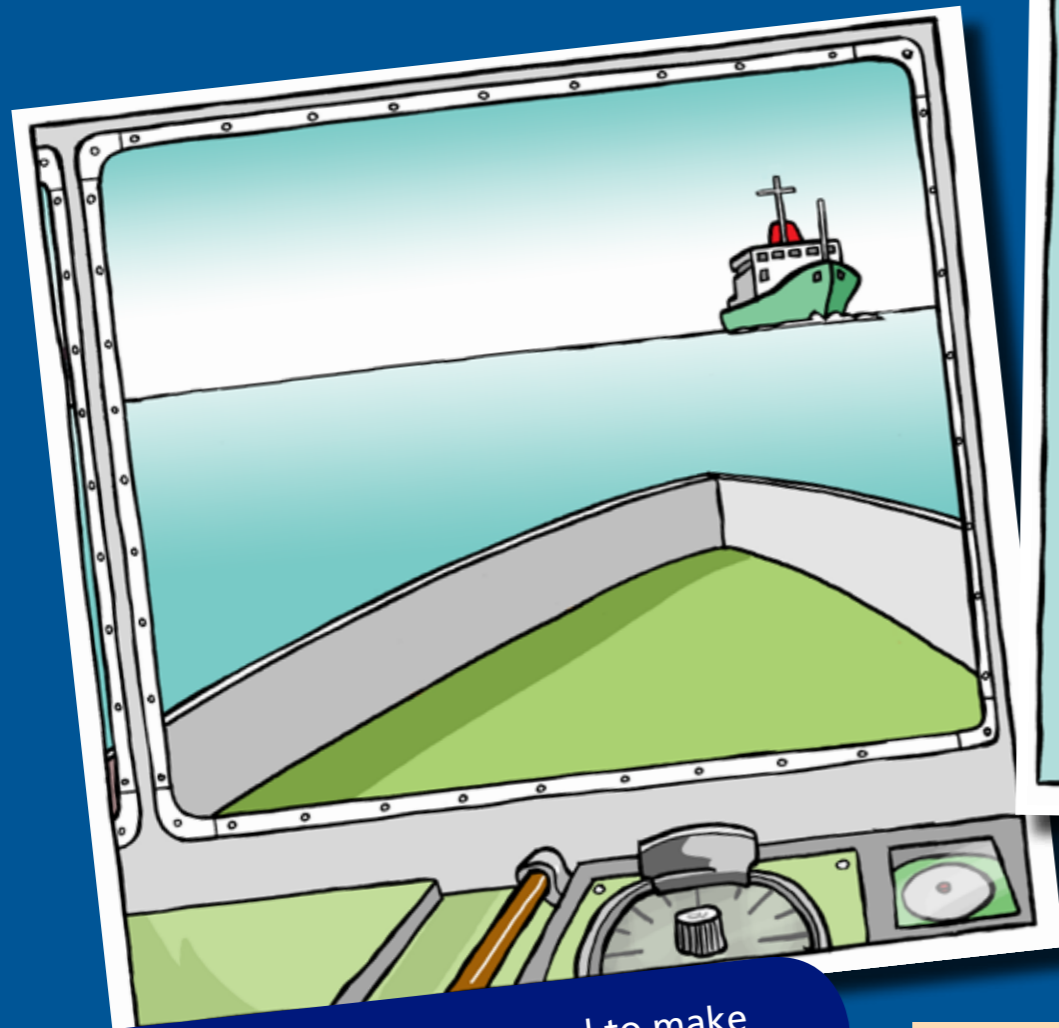


COLREGS RULE 14 HEAD-ON SITUATION



STEAMSHIP MUTUAL



Head-on situation – each vessel to make an early and substantial alteration of course to starboard.

- (a) When two power-driven vessels are meeting on reciprocal or nearly reciprocal courses so as to involve risk of collision each shall alter her course to starboard so that each shall pass on the port side of the other.
- (b) Such a situation shall be deemed to exist when a vessel sees the other ahead or nearly ahead and by night she could see the masthead lights of the other in a line or nearly in a line and/or both sidelights and by day she observes the corresponding aspect of the other vessel.
- (c) When a vessel is in any doubt as to whether such a situation exists she shall assume that it does exist and act accordingly.

Head-on situation – each vessel to make an early and substantial alteration of course to starboard.